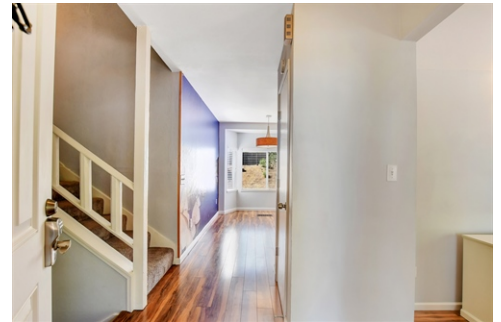


Welcome Home!



\$ 535,000



138 Hyde Place , Antioch , CA 94509

- » Beds: 4 | Baths: 2 Full, 1 Half
- » MLS #: 40915421
- » Single Family | 2,275 ft² | Lot: 8,500 ft²
- » More Info: 138HydePlace.IsForSale.com



Elizabeth Partida
(925) 698-4389
elizabethpartida@comcast.net
<http://www.elizabethpartida.exprealty.com>

exp[®]
REALTY
LUXURY

eXp Realty of California, Inc.
9040 Brentwood Blvd.
Suite A
Brentwood, CA 94513
(925) 698-4389

Beautiful custom tri-level floor plan on a cul-de-sac. Larger private lot that backs to open space. Classic entryway that leads you to the main level, then walk into the large living room with vaulted ceilings, dining room with a modern chandelier and slider door that leads you the private backyard, updated kitchen with quartz countertops and nook area. Upper level host the spacious private owner's suite, and a full updated bathroom, bedroom, and a loft with a cozy fireplace and a wet bar area for entertaining. The lower level has two bedrooms and full updated bathroom. Walking distance to the park, conveniently located near freeway access and Bart station.

